

APPENDIX G: CYBERSECURITY-RELATED CIP (CLASSIFICATION OF INSTRUCTIONAL PROGRAMS) CODES

52.1206 Information Resources Management.

A program that prepares individuals to apply principles of information technology, computer systems management, and business operations to the planning, management, and evaluation of information services in organizations. Includes instruction in telecommunications, systems planning and integration, information policy, information security, contracting and purchasing, budgeting, information technology, operations management, human resources, communications skills, and applicable law and regulations.

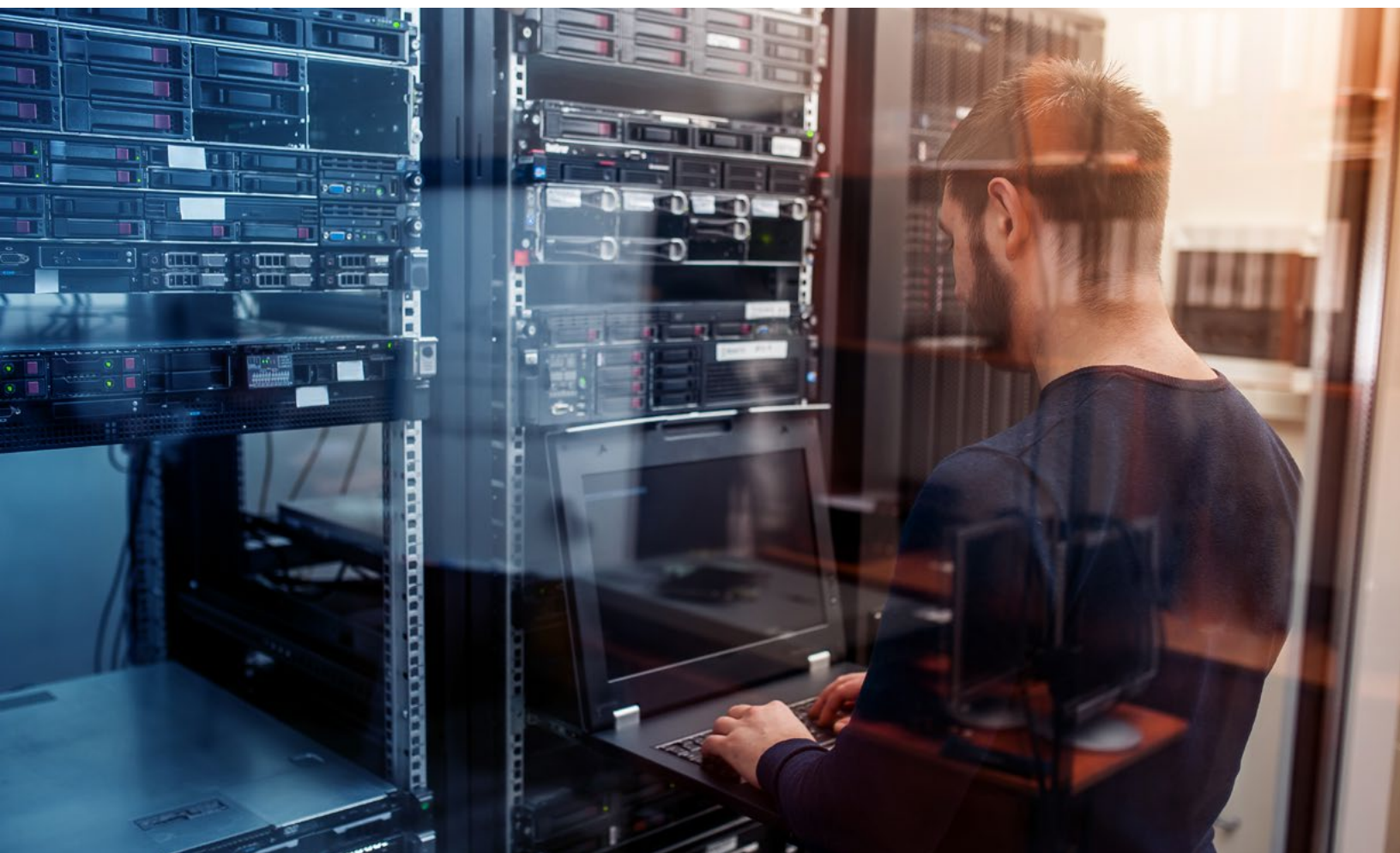
Examples:

- Information Management
- Chief Information Officer Training

52.2101 Telecommunications Management.

A program that prepares individuals to apply business skills to design, implement, and manage the voice, video, and data networking systems of organizations. Includes instruction in telecommunications concepts and technologies, network operations and management, wireless communications and mobile computing, cybersecurity, regulation and public policy, business practices and management, and written and oral communications.

For a full listing of the universe of 2010 CIP Codes, visit the National Center for Educational Statistics, Resources Page, CIP Codes: <https://nces.ed.gov/ipeds/cipcode/resources.aspx?y=55>



APPENDIX H: POSTSECONDARY CYBERSECURITY PROGRAMMING IN CALIFORNIA

List of IPEDS-reporting Postsecondary Institutions Providing Cybersecurity Programming in California, with Institutional Characteristics, by Region

Institution Name	ZIP Code Location	Enrollment	Sector	Degree/ nondegree (D/ND) ¹	Tuition & Fees	Net Price ²
Bay Area						
Academy of Art University	94105	10,000 - 19,999	Private for-profit, 4-year or above	D	\$20,340	\$29,301
Argosy University-San Francisco Bay Area	94501	Under 1,000	Private for-profit, 4-year or above	D	\$13,560	
Argosy University-The Art Institute of California-San Francisco	94102-4908	Under 1,000	Private for-profit, 4-year or above	D	\$18,744	\$22,560
Argosy University-The Art Institute of California-Silicon Valley	94086	Under 1,000	Private for-profit, 4-year or above	D		
Berkeley City College	94704	5,000 - 9,999	Public, 2-year	D	\$1,156	\$8,908
Cabrillo College	95003	10,000 - 19,999	Public, 2-year	D	\$1,376	\$10,228
California State University-East Bay	94542	10,000 - 19,999	Public, 4-year or above	D	\$6,564	\$10,758
California State University-Monterey Bay	93955-8001	5,000 - 9,999	Public, 4-year or above	D	\$6,119	\$11,390
Canada College	94061-1099	5,000 - 9,999	Public, 2-year	D	\$1,344	\$5,441
Chabot College	94545	10,000 - 19,999	Public, 2-year	D	\$1,138	\$6,877
City College of San Francisco	94112-1898	20,000 and above	Public, 2-year	D	\$1,598	\$5,466
Cogswell College	95134	Under 1,000	Private for-profit, 4-year or above	D	\$16,640	\$23,304
College of Alameda	94501	5,000 - 9,999	Public, 2-year	D	\$1,156	\$7,071
College of Marin	94904-2590	5,000 - 9,999	Public, 2-year	D	\$1,488	\$9,717
College of San Mateo	94402-3784	5,000 - 9,999	Public, 2-year	D	\$1,324	\$4,494
Contra Costa College	94806-3195	5,000 - 9,999	Public, 2-year	D	\$1,298	\$8,366
De Anza College	95014	20,000 and above	Public, 2-year	D	\$1,542	\$6,544
Diablo Valley College	94523	10,000 - 19,999	Public, 2-year	D	\$1,298	\$7,055
Evergreen Valley College	95135-1598	5,000 - 9,999	Public, 2-year	D	\$1,338	\$11,694
Foothill College	94022	10,000 - 19,999	Public, 4-year or above	D	\$1,551	\$6,281
Fresno City College	93741	20,000 and above	Public, 2-year	D	\$1,142	\$4,002
Gavilan College	95020	5,000 - 9,999	Public, 2-year	D	\$1,246	\$7,016
Golden Gate University-San Francisco	94105-2968	1,000 - 4,999	Private not-for- profit, 4-year or above	D	\$14,640	
Hartnell College	93901	10,000 - 19,999	Public, 2-year	D	\$1,420	\$10,815
Holy Names University	94619-1699	Under 1,000	Private not-for- profit, 4-year or above	D	\$35,666	\$21,464
International Technological University	95134	1,000 - 4,999	Private not-for- profit, 4-year or above	D		
Laney College	94607	10,000 - 19,999	Public, 2-year	D	\$1,156	\$9,709
Las Positas College	94551-7650	5,000 - 9,999	Public, 2-year	D	\$1,138	\$6,593
Los Medanos College	94565	5,000 - 9,999	Public, 2-year	D	\$1,298	\$6,614
Merritt College	94619-3196	5,000 - 9,999	Public, 2-year	D	\$1,156	\$10,741

APPENDIX H: POSTSECONDARY CYBERSECURITY PROGRAMMING IN CALIFORNIA

List of IPEDS-reporting Postsecondary Institutions Providing Cybersecurity Programming in California, with Institutional Characteristics, by Region (continued)

Institution Name	ZIP Code Location	Enrollment	Sector	Degree/ nondegree (D/ND) ¹	Tuition & Fees	Net Price ²
Bay Area (continued)						
Mills College	94613	1,000 - 4,999	Private not-for-profit, 4-year or above	D	\$44,258	\$27,647
Mission College	95054-1897	5,000 - 9,999	Public, 2-year	D	\$1,174	\$10,004
Monterey Peninsula College	93940-4799	5,000 - 9,999	Public, 2-year	D	\$1,174	\$6,081
Napa Valley College	94558-6236	5,000 - 9,999	Public, 2-year	D	\$1,142	\$13,067
Naval Postgraduate School	93943	1,000 - 4,999	Public, 4-year or above	D		
Notre Dame de Namur University	94002-1908	1,000 - 4,999	Private not-for-profit, 4-year or above	D	\$32,608	\$28,873
Ohlone College	94539-0390	5,000 - 9,999	Public, 2-year	D	\$1,162	\$12,792
Pacific Union College	94508-9707	1,000 - 4,999	Private not-for-profit, 4-year or above	D	\$29,064	\$24,555
San Francisco State University	94132	20,000 and above	Public, 4-year or above	D	\$6,476	\$13,250
San Jose City College	95128-2798	5,000 - 9,999	Public, 2-year	D	\$1,338	\$11,410
San Jose State University	95192-0001	20,000 and above	Public, 4-year or above	D	\$7,378	\$13,777
Santa Clara University	95053	5,000 - 9,999	Private not-for-profit, 4-year or above	D	\$45,300	\$37,657
Santa Rosa Junior College	95401-4395	20,000 and above	Public, 2-year	D	\$1,318	\$8,989
Skyline College	94066-1698	5,000 - 9,999	Public, 4-year or above	D	\$1,447	\$4,251
Solano Community College	94534-3197	5,000 - 9,999	Public, 2-year	D	\$1,416	\$7,978
Sonoma State University	94928-3609	5,000 - 9,999	Public, 4-year or above	D	\$7,330	\$16,204
Stanford University	94305	10,000 - 19,999	Private not-for-profit, 4-year or above	D	\$46,320	\$16,695
University of California-Berkeley	94720	20,000 and above	Public, 4-year or above	D	\$13,431	\$17,160
University of California-San Francisco	94143-0244	1,000 - 4,999	Public, 4-year or above	D		
University of California-Santa Cruz	95064-1011	10,000 - 19,999	Public, 4-year or above	D	\$13,461	\$16,261
University of San Francisco	94117-1080	10,000 - 19,999	Private not-for-profit, 4-year or above	D	\$42,634	\$35,054
West Valley College	95070-5698	5,000 - 9,999	Public, 2-year	D	\$1,186	\$10,047
Central California						
Bakersfield College	93305-1299	20,000 and above	Public, 4-year or above	D	\$1,326	\$4,409
California State University-Bakersfield	93311-1099	5,000 - 9,999	Public, 4-year or above	D	\$6,811	\$6,143

APPENDIX H: POSTSECONDARY CYBERSECURITY PROGRAMMING IN CALIFORNIA

List of IPEDS-reporting Postsecondary Institutions Providing Cybersecurity Programming in California, with Institutional Characteristics, by Region (continued)

Institution Name	ZIP Code Location	Enrollment	Sector	Degree/ nondegree (D/ND) [†]	Tuition & Fees	Net Price [‡]
Central California (continued)						
California State University-Fresno	93740	20,000 and above	Public, 4-year or above	D	\$6,311	\$6,177
California State University-Stanislaus	95382-0299	5,000 - 9,999	Public, 4-year or above	D	\$6,704	\$7,557
Cerro Coso Community College	93555-9571	5,000 - 9,999	Public, 2-year	D	\$1,290	\$6,661
Clovis Community College	93730	5,000 - 9,999	Public, 2-year	D	\$1,304	\$8,024
College of the Sequoias	93277-2214	10,000 - 19,999	Public, 2-year	D	\$1,388	\$2,868
Columbia College	95370	1,000 - 4,999	Public, 2-year	D	\$1,162	\$7,790
Merced College	95348-2898	10,000 - 19,999	Public, 2-year	D	\$1,141	\$9,842
Milan Institute-Visalia	93277	Under 1,000	Private for-profit, less-than 2-year	ND		\$20,666
Modesto Junior College	95350-5800	10,000 - 19,999	Public, 4-year or above	D	\$1,162	\$10,068
MTI Business College Inc	95207-4349	Under 1,000	Private for-profit, less-than 2-year	ND		\$17,967
Porterville College	93257	1,000 - 4,999	Public, 2-year	D	\$1,322	\$3,456
Reedley College	93654	10,000 - 19,999	Public, 2-year	D	\$1,324	\$4,534
San Joaquin Delta College	95207	10,000 - 19,999	Public, 2-year	D	\$1,104	\$10,579
San Joaquin Valley College-Visalia	93291-9283	5,000 - 9,999	Private for-profit, 2-year	D		\$18,733
Santa Barbara Business College-Bakersfield	93309	Under 1,000	Private for-profit, 4-year or above	D	\$13,619	\$12,586
Taft College	93268	5,000 - 9,999	Public, 2-year	D	\$1,134	\$7,374
University of the Pacific	95211-0197	5,000 - 9,999	Private not-for-profit, 4-year or above	D	\$42,934	\$33,794
West Hills College-Coalinga	93210	1,000 - 4,999	Public, 2-year	D	\$1,380	\$8,411
West Hills College-Lemoore	93245	1,000 - 4,999	Public, 2-year	D	\$1,380	\$10,291
Far North						
American River College	95841-4286	20,000 and above	Public, 2-year	D	\$1,104	\$8,829
Argosy University-The Art Institute of California-Sacramento	95833	Under 1,000	Private for-profit, 4-year or above	D	\$18,744	\$23,065
Asher College	95825	Under 1,000	Private for-profit, 2-year	D		\$18,286
Butte College	95965-8399	10,000 - 19,999	Public, 2-year	D	\$1,364	\$5,921
California State University-Chico	95929-0150	10,000 - 19,999	Public, 4-year or above	D	\$7,022	\$13,645
California State University-Sacramento	95819-2694	20,000 and above	Public, 4-year or above	D	\$6,872	\$9,127
College of the Redwoods	95501-9300	1,000 - 4,999	Public, 2-year	D	\$1,182	\$5,514
College of the Siskiyous	96094-2899	1,000 - 4,999	Public, 2-year	D	\$1,154	\$8,565
Cosumnes River College	95823-5799	10,000 - 19,999	Public, 2-year	D	\$1,104	\$10,022
Feather River Community College District	95971-9124	1,000 - 4,999	Public, 4-year or above	D	\$1,461	\$12,225
Folsom Lake College	95630	5,000 - 9,999	Public, 2-year	D	\$1,104	\$10,480

APPENDIX H: POSTSECONDARY CYBERSECURITY PROGRAMMING IN CALIFORNIA

List of IPEDS-reporting Postsecondary Institutions Providing Cybersecurity Programming in California, with Institutional Characteristics, by Region (continued)

Institution Name	ZIP Code Location	Enrollment	Sector	Degree/ nondegree (D/ND) [†]	Tuition & Fees	Net Price [‡]
Far North (continued)						
Humboldt State University	95521-8299	5,000 - 9,999	Public, 4-year or above	D	\$7,195	\$13,147
Lake Tahoe Community College	96150	1,000 - 4,999	Public, 2-year	D	\$1,224	\$8,453
Mendocino College	95482	1,000 - 4,999	Public, 2-year	D	\$1,422	\$9,120
MTI College	95841-9817	Under 1,000	Private for-profit, 2-year	D		\$16,836
Sacramento City College	95822-1386	20,000 and above	Public, 2-year	D	\$1,104	\$10,107
Shasta College	96003	5,000 - 9,999	Public, 4-year or above	D	\$1,183	\$7,537
Sierra College	95677-3397	10,000 - 19,999	Public, 2-year	D	\$1,142	\$8,215
University of California-Davis	95616-8678	20,000 and above	Public, 4-year or above	D	\$13,951	\$16,039
Yuba College	95901	5,000 - 9,999	Public, 2-year	D	\$1,144	\$5,948
Inland Empire/Desert Region						
Argosy University-Inland Empire	91761	Under 1,000	Private for-profit, 4-year or above	D	\$13,560	\$21,132
Argosy University-The Art Institute of California-Inland Empire	92408-2800	1,000 - 4,999	Private for-profit, 4-year or above	D	\$18,744	\$21,426
Barstow Community College	92311	1,000 - 4,999	Public, 2-year	D	\$1,104	\$9,312
California Baptist University	92504-3297	5,000 - 9,999	Private not-for-profit, 4-year or above	D	\$30,384	\$25,875
California State University-San Bernardino	92407-2397	20,000 and above	Public, 4-year or above	D	\$6,577	\$6,444
Chaffey College	91737-3002	20,000 and above	Public, 2-year	D	\$1,153	\$10,306
College of the Desert	92260	10,000 - 19,999	Public, 2-year	D	\$1,326	\$9,484
Copper Mountain Community College	92252	1,000 - 4,999	Public, 2-year	D	\$1,108	\$8,543
Crafton Hills College	92339-1799	5,000 - 9,999	Public, 2-year	D	\$1,142	\$13,506
La Sierra University	92515-8247	1,000 - 4,999	Private not-for-profit, 4-year or above	D	\$30,471	\$23,414
Mayfield College	92234	Under 1,000	Private for-profit, 2-year	D	\$12,648	\$21,354
Milan Institute-Palm Desert	92211	Under 1,000	Private for-profit, less-than 2-year	ND		\$18,710
Moreno Valley College	92551	5,000 - 9,999	Public, 2-year	D	\$1,416	\$8,043
Mt San Jacinto Community College District	92583-2399	10,000 - 19,999	Public, 2-year	D	\$1,386	\$6,783
Norco College	92860	5,000 - 9,999	Public, 2-year	D	\$1,416	\$7,337
Palo Verde College	92225	1,000 - 4,999	Public, 2-year	D	\$1,288	\$11,681
Riverside City College	92506	10,000 - 19,999	Public, 2-year	D	\$1,426	\$7,670
San Bernardino Valley College	92410-2798	10,000 - 19,999	Public, 2-year	D	\$1,238	\$8,887
University of California-Riverside	92521	20,000 and above	Public, 4-year or above	D	\$13,527	\$12,841

APPENDIX H: POSTSECONDARY CYBERSECURITY PROGRAMMING IN CALIFORNIA

List of IPEDS-reporting Postsecondary Institutions Providing Cybersecurity Programming in California, with Institutional Characteristics, by Region (continued)

Institution Name	ZIP Code Location	Enrollment	Sector	Degree/ nondegree (D/ND) ¹	Tuition & Fees	Net Price ²
Inland Empire/Desert Region (continued)						
University of Redlands	92373-0999	5,000 - 9,999	Private not-for-profit, 4-year or above	D	\$44,900	\$34,200
Victor Valley College	92395-5850	10,000 - 19,999	Public, 2-year	D	\$1,114	\$9,195
Los Angeles/Orange County						
ABCO Technology	90045-1551	Under 1,000	Private for-profit, less-than 2-year	ND		\$14,917
Advanced Computing Institute	90010-3911	Under 1,000	Private for-profit, 2-year	D		\$10,210
Allied American University	92653-1337	Under 1,000	Private for-profit, 4-year or above	D		\$18,359
Argosy University-Los Angeles	90045	Under 1,000	Private for-profit, 4-year or above	D	\$13,560	\$21,327
Argosy University-Orange County	92868	Under 1,000	Private for-profit, 4-year or above	D	\$13,560	\$25,040
Argosy University-The Art Institute of California-Hollywood	91601	1,000 - 4,999	Private for-profit, 4-year or above	D	\$18,744	\$28,044
Argosy University-The Art Institute of California-Los Angeles	90405-3035	Under 1,000	Private for-profit, 4-year or above	D		
Argosy University-The Art Institute of California-Orange County	92704	Under 1,000	Private for-profit, 4-year or above	D	\$18,744	\$23,872
Art Center College of Design	91103	1,000 - 4,999	Private not-for-profit, 4-year or above	D	\$39,230	\$43,814
Azusa Pacific University	91702-7000	10,000 - 19,999	Private not-for-profit, 4-year or above	D	\$34,754	\$28,506
Bethesda University	92801	Under 1,000	Private not-for-profit, 4-year or above	D	\$6,174	\$10,012
Biola University	90639-0001	5,000 - 9,999	Private not-for-profit, 4-year or above	D	\$34,498	\$32,273
Brand College	91203	Under 1,000	Private for-profit, less-than 2-year	ND		
Brandman University	92618	5,000 - 9,999	Private not-for-profit, 4-year or above	D	\$12,240	
California Career School	92805	Under 1,000	Private for-profit, less-than 2-year	ND		\$5,548
California Institute of Technology	91125	1,000 - 4,999	Private not-for-profit, 4-year or above	D	\$45,390	\$26,839
California Intercontinental University	92614-5636	Under 1,000	Private for-profit, 4-year or above	D	\$8,690	
California State Polytechnic University-Pomona	91768	20,000 and above	Public, 4-year or above	D	\$7,016	\$12,598
California State University-Dominguez Hills	90747-0005	10,000 - 19,999	Public, 4-year or above	D	\$6,213	\$3,297

APPENDIX H: POSTSECONDARY CYBERSECURITY PROGRAMMING IN CALIFORNIA

List of IPEDS-reporting Postsecondary Institutions Providing Cybersecurity Programming in California, with Institutional Characteristics, by Region (continued)

Institution Name	ZIP Code Location	Enrollment	Sector	Degree/ nondegree (D/ND) ¹	Tuition & Fees	Net Price ²
Los Angeles/Orange County (continued)						
California State University-Fullerton	92831-3599	20,000 and above	Public, 4-year or above	D	\$6,437	\$8,170
California State University-Long Beach	90840-0115	20,000 and above	Public, 4-year or above	D	\$6,452	\$9,867
California State University-Los Angeles	90032-8506	20,000 and above	Public, 4-year or above	D	\$6,355	\$3,933
California State University-Northridge	91330	20,000 and above	Public, 4-year or above	D	\$6,569	\$6,574
California University of Management and Sciences	92801	Under 1,000	Private not-for-profit, 4-year or above	D	\$9,570	
Cerritos College	90650-6298	20,000 and above	Public, 2-year	D	\$1,346	\$10,579
Chapman University	92866	5,000 - 9,999	Private not-for-profit, 4-year or above	D	\$47,260	\$40,709
Charter College-Canyon Country	91351	Under 1,000	Private for-profit, 4-year or above	D	\$17,336	
Citrus College	91741-1899	10,000 - 19,999	Public, 2-year	D	\$1,174	\$4,051
Claremont Graduate University	91711-6160	1,000 - 4,999	Private not-for-profit, 4-year or above	D		
Claremont McKenna College	91711-6400	1,000 - 4,999	Private not-for-profit, 4-year or above	D	\$49,045	\$30,527
Coastline Community College	92708-2597	10,000 - 19,999	Public, 2-year	D	\$1,136	\$17,760
Cypress College	90630-5897	10,000 - 19,999	Public, 2-year	D	\$1,138	\$8,102
East Los Angeles College	91754-6099	20,000 and above	Public, 2-year	D	\$1,222	\$9,024
East San Gabriel Valley Regional Occupational Program	91790	Under 1,000	Public, 2-year	D		\$15,466
El Camino College-Compton Center	90221-5393	5,000 - 9,999	Public, 2-year	D	\$1,142	\$9,841
El Camino Community College District	90506	20,000 and above	Public, 2-year	D	\$1,142	\$10,569
Empire College	95403-2126	Under 1,000	Private for-profit, 4-year or above	D		\$15,821
Fremont College	90703	Under 1,000	Private for-profit, 4-year or above	D		\$21,542
Fullerton College	92832-2095	20,000 and above	Public, 2-year	D	\$1,138	\$7,001
Glendale Community College	91208-2894	10,000 - 19,999	Public, 2-year	D	\$1,175	\$3,799
Golden West College	92647-2710	10,000 - 19,999	Public, 2-year	D	\$1,176	\$9,846
Harvey Mudd College	91711	Under 1,000	Private not-for-profit, 4-year or above	D	\$50,649	\$35,460
Irvine Valley College	92618-0301	10,000 - 19,999	Public, 2-year	D	\$1,326	\$7,515
Learnet Academy Inc	90020	Under 1,000	Private for-profit, 2-year	D		
Long Beach City College	90808-1706	20,000 and above	Public, 2-year	D	\$1,182	\$5,467
Los Angeles City College	90029	10,000 - 19,999	Public, 2-year	D	\$1,198	\$7,470

APPENDIX H: POSTSECONDARY CYBERSECURITY PROGRAMMING IN CALIFORNIA

List of IPEDS-reporting Postsecondary Institutions Providing Cybersecurity Programming in California, with Institutional Characteristics, by Region (continued)

Institution Name	ZIP Code Location	Enrollment	Sector	Degree/ nondegree (D/ND) ¹	Tuition & Fees	Net Price ²
Los Angeles/Orange County (continued)						
Los Angeles Harbor College	90744-2397	5,000 - 9,999	Public, 2-year	D	\$1,198	\$11,120
Los Angeles Mission College	91342-3200	10,000 - 19,999	Public, 2-year	D	\$1,198	\$9,425
Los Angeles Pierce College	91371-0002	20,000 and above	Public, 2-year	D	\$1,198	\$9,980
Los Angeles Southwest College	90047-4899	5,000 - 9,999	Public, 2-year	D	\$1,198	\$7,338
Los Angeles Trade Technical College	90015-4181	10,000 - 19,999	Public, 2-year	D	\$1,198	\$7,330
Los Angeles Valley College	91401-4096	10,000 - 19,999	Public, 2-year	D	\$1,198	\$9,684
Loyola Marymount University	90045-2659	5,000 - 9,999	Private not-for-profit, 4-year or above	D	\$42,795	\$40,946
Mount Saint Mary's University	90049-1599	1,000 - 4,999	Private not-for-profit, 4-year or above	D	\$35,944	\$27,134
Mt San Antonio College	91789-1399	20,000 and above	Public, 2-year	D	\$1,348	\$4,555
Mt Sierra College	91016	Under 1,000	Private for-profit, 4-year or above	D	\$15,588	\$21,513
Occidental College	90041-3392	1,000 - 4,999	Private not-for-profit, 4-year or above	D	\$49,248	\$31,990
Orange Coast College	92626	20,000 and above	Public, 2-year	D	\$1,184	\$10,515
Pacific States University	90010	Under 1,000	Private not-for-profit, 4-year or above	D	\$16,005	
Palladium Technical Academy	91780	Under 1,000	Private for-profit, less-than 2-year	ND		\$18,385
Pasadena City College	91106-2003	20,000 and above	Public, 2-year	D	\$1,152	\$6,780
PCI College	90703	Under 1,000	Private for-profit, 2-year	ND		\$23,210
Pepperdine University	90263	5,000 - 9,999	Private not-for-profit, 4-year or above	D	\$48,342	\$39,637
Pitzer College	91711-6101	1,000 - 4,999	Private not-for-profit, 4-year or above	D	\$48,670	\$25,521
Pomona College	91711-6319	1,000 - 4,999	Private not-for-profit, 4-year or above	D	\$47,620	\$18,140
Rio Hondo College	90601-1616	10,000 - 19,999	Public, 4-year or above	D	\$1,360	\$7,420
Saddleback College	92692-3635	10,000 - 19,999	Public, 2-year	D	\$1,326	\$9,145
Santa Ana College	92706-3398	20,000 and above	Public, 4-year or above	D	\$1,142	\$5,912
Santa Monica College	90405-1628	20,000 and above	Public, 4-year or above	D	\$1,136	\$7,016
Santiago Canyon College	92869-4512	10,000 - 19,999	Public, 2-year	D	\$1,142	\$5,703
Scripps College	91711-3905	1,000 - 4,999	Private not-for-profit, 4-year or above	D	\$49,152	\$37,860

APPENDIX H: POSTSECONDARY CYBERSECURITY PROGRAMMING IN CALIFORNIA

List of IPEDS-reporting Postsecondary Institutions Providing Cybersecurity Programming in California, with Institutional Characteristics, by Region (continued)

Institution Name	ZIP Code Location	Enrollment	Sector	Degree/ nondegree (D/ND) [†]	Tuition & Fees	Net Price [‡]
Los Angeles/Orange County (continued)						
Southern California Institute of Technology	92801-3758	Under 1,000	Private for-profit, 4-year or above	D	\$17,235	\$24,026
Stanbridge College	92612	1,000 - 4,999	Private for-profit, 4-year or above	D		\$25,027
The Master's University and Seminary	91321-1200	1,000 - 4,999	Private not-for-profit, 4-year or above	D	\$30,920	\$26,650
Trident University International	90630-5041	5,000 - 9,999	Private for-profit, 4-year or above	D	\$9,000	\$13,175
Unitek College	94538	1,000 - 4,999	Private for-profit, 4-year or above	D	\$32,685	\$42,096
University of California-Irvine	92697	20,000 and above	Public, 4-year or above	D	\$13,252	\$13,780
University of California-Los Angeles	90095-1405	20,000 and above	Public, 4-year or above	D	\$12,763	\$14,236
University of La Verne	91750-4401	5,000 - 9,999	Private not-for-profit, 4-year or above	D	\$38,560	\$22,284
University of Southern California	90089	20,000 and above	Private not-for-profit, 4-year or above	D	\$50,210	\$32,932
University of the People	91101	1,000 - 4,999	Private not-for-profit, 4-year or above	D	\$1,000	\$2,138
University of the West	91770	Under 1,000	Private not-for-profit, 4-year or above	D	\$10,656	\$12,474
Vanguard University of Southern California	92626	1,000 - 4,999	Private not-for-profit, 4-year or above	D	\$30,050	\$21,827
West Los Angeles College	90230-3519	10,000 - 19,999	Public, 4-year or above	D	\$1,198	\$8,643
San Diego/Imperial						
Advanced Training Associates	92020	Under 1,000	Private for-profit, 2-year	D		\$12,810
Argosy University-San Diego	92108	Under 1,000	Private for-profit, 4-year or above	D	\$13,560	\$20,749
Argosy University-The Art Institute of California-San Diego	92108-4423	1,000 - 4,999	Private for-profit, 4-year or above	D	\$18,744	\$24,168
Ashford University	92123	20,000 and above	Private for-profit, 4-year or above	D	\$10,720	\$18,235
Associated Technical College-San Diego	92101	Under 1,000	Private for-profit, less-than 2-year	ND		\$21,763
California College San Diego	92069-2971	Under 1,000	Private not-for-profit, 4-year or above	D	\$16,968	\$25,215
California Miramar University	92108	Under 1,000	Private for-profit, 4-year or above	D	\$8,240	\$20,960

APPENDIX H: POSTSECONDARY CYBERSECURITY PROGRAMMING IN CALIFORNIA

List of IPEDS-reporting Postsecondary Institutions Providing Cybersecurity Programming in California, with Institutional Characteristics, by Region (continued)

Institution Name	ZIP Code Location	Enrollment	Sector	Degree/ nondegree (D/ND) ¹	Tuition & Fees	Net Price ²
San Diego/Imperial (continued)						
California State University-San Marcos	92096-0001	10,000 - 19,999	Public, 4-year or above	D	\$7,269	\$8,985
Coleman University	92123-1506	Under 1,000	Private not-for-profit, 4-year or above	D	\$20,725	\$25,619
Cuyamaca College	92019	5,000 - 9,999	Public, 2-year	D	\$1,388	\$5,474
Grossmont College	92020-1799	10,000 - 19,999	Public, 2-year	D	\$1,388	\$2,953
Imperial Valley College	92251-0158	5,000 - 9,999	Public, 2-year	D	\$1,365	\$4,605
MediaTech Institute-Oceanside	92054-5116	Under 1,000	Private for-profit, less-than 2-year	ND		\$22,176
MiraCosta College	92056-3899	10,000 - 19,999	Public, 2-year	D	\$1,152	\$5,743
National University	92037-1011	10,000 - 19,999	Private not-for-profit, 4-year or above	D	\$12,744	\$22,377
Palomar College	92069-1487	20,000 and above	Public, 2-year	D	\$1,338	\$5,137
Platt College-San Diego	92115-3919	Under 1,000	Private for-profit, 4-year or above	D	\$23,250	\$35,949
Point Loma Nazarene University	92106-2899	1,000 - 4,999	Private not-for-profit, 4-year or above	D	\$32,400	\$29,954
San Diego City College	92101-4787	10,000 - 19,999	Public, 2-year	D	\$1,142	\$6,358
San Diego Mesa College	92111-4998	20,000 and above	Public, 4-year or above	D	\$1,142	\$7,567
San Diego Miramar College	92126-2999	10,000 - 19,999	Public, 2-year	D	\$1,142	\$6,850
San Diego State University	92182	20,000 and above	Public, 4-year or above	D	\$6,976	\$14,344
Southwestern College	91910-7299	10,000 - 19,999	Public, 2-year	D	\$1,336	\$5,652
University of California-San Diego	92093	20,000 and above	Public, 4-year or above	D	\$13,530	\$14,770
University of San Diego	92110-2492	5,000 - 9,999	Private not-for-profit, 4-year or above	D	\$44,586	\$38,596
South Central Coast						
Allan Hancock College	93454-6399	10,000 - 19,999	Public, 2-year	D	\$1,346	\$5,387
Antelope Valley College	93536-5426	10,000 - 19,999	Public, 4-year or above	D	\$1,104	\$4,646
California Lutheran University	91360-2787	1,000 - 4,999	Private not-for-profit, 4-year or above	D	\$38,430	\$29,038
California Polytechnic State University-San Luis Obispo	93407	20,000 and above	Public, 4-year or above	D	\$9,001	\$18,530
California State University-Channel Islands	93012	5,000 - 9,999	Public, 4-year or above	D	\$6,547	\$14,461
College of the Canyons	91355-1899	10,000 - 19,999	Public, 2-year	D	\$1,154	\$6,680
Cuesta College	93403-8106	10,000 - 19,999	Public, 2-year	D	\$1,234	\$10,342